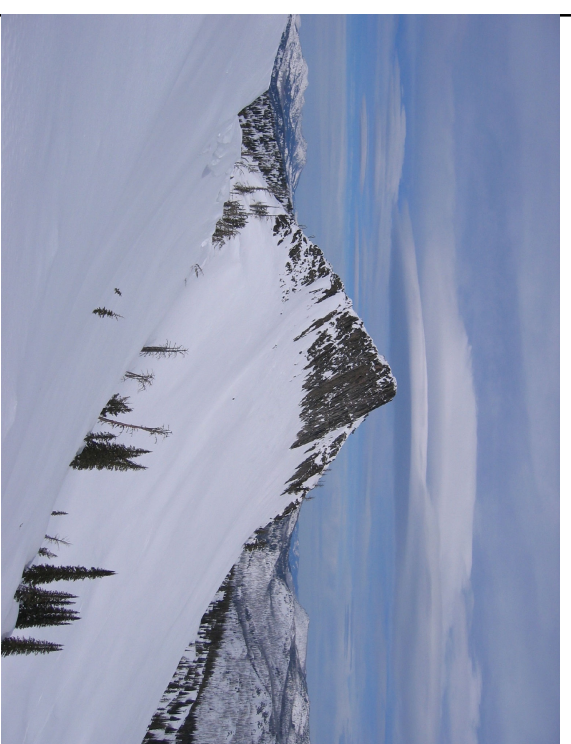


America's Great Outdoors



Winter Travel Map Payette National Forest

IDAHO



Forest Service

United States
Department of Agriculture

Printed 2019

Purpose of this Map
The Payette National Forest Winter Travel Map is designed to provide information on current snow conditions and road status. Some routes may be closed to snowcat and snowmobile use. Some routes may be closed to snowcat and snowmobile use. Some routes may be closed to snowcat and snowmobile use. Some routes may be closed to snowcat and snowmobile use.

Local Area Requirements
Use extreme caution in and around snowcat routes. Special Order closure areas and designated ski areas (both marked in light purple on this map) are closed to snowmobiles. Overnight parking is allowed at the West Face parking lot only. No overnight parking at Gordon Titus Upper Elevation parking lot per Special Order 0412-545.

Know your Responsibilities:
1) Carry and know how to use avalanche rescue gear. 2) Obey all posted signs and area designations. 3) Always stay in control and maintain the ability to stop. 4) When snowmobiling, yield to up-hill traffic and snow cats. 5) Do not stop where you obstruct roads and trails, or are not visible to other users. 6) Do not stop where you obstruct roads and trails, or are not visible to other users. 7) Slow low ropes when not towing a skier/ride. 8) Stack your tracks, terrain conservation benefits all skiers. 9) Expose only one person at a time to potential avalanche terrain and do not ski or ride above groups below, especially on steep terrain.

Thank you to the Forest Partners:
The Payette National Forest would like to thank the following for their contribution of both time and funds to the publication of this map:
• Kram's Home Furnishings
• Mile High Power Sports
• CR Motorworks
• McCall Area Snowmobile Club
• Valley County
• Adams County
• Idaho State Snowmobile Association

Cover Photo by Rick Hudson



Avalanche Center Information
Check the website at www.avalanche.org for the latest information on avalanche conditions. The website is located at 2026-934-0419 or check the avalanche website at www.avalanche.org.

Welcome to Winter on the Payette National Forest

The Winter Travel Map for the Payette National Forest identifies designated routes and open play areas for over the snow motor vehicle use for the Payette National Forest.

Over the snow vehicles are defined as:
A motor vehicle that is designed for use over the snow and runs on tracks and/or skis or shoes while in use over the snow.

This map displays the Special Orders written to enforce winter over-snow travel.
The Forest-Wide Special Order (0412-541):

Closes portions of the Forest to over-snow motor vehicle use. These closures are intended to protect riparian areas, riparian-dependent wildlife species, reduce hunting vulnerability for game species, reduce degradation of water quality, protect riparian areas to provide for non-motorized recreation experiences, and to restore or protect habitat for Threatened, Endangered, Candidate and Sensitive species.

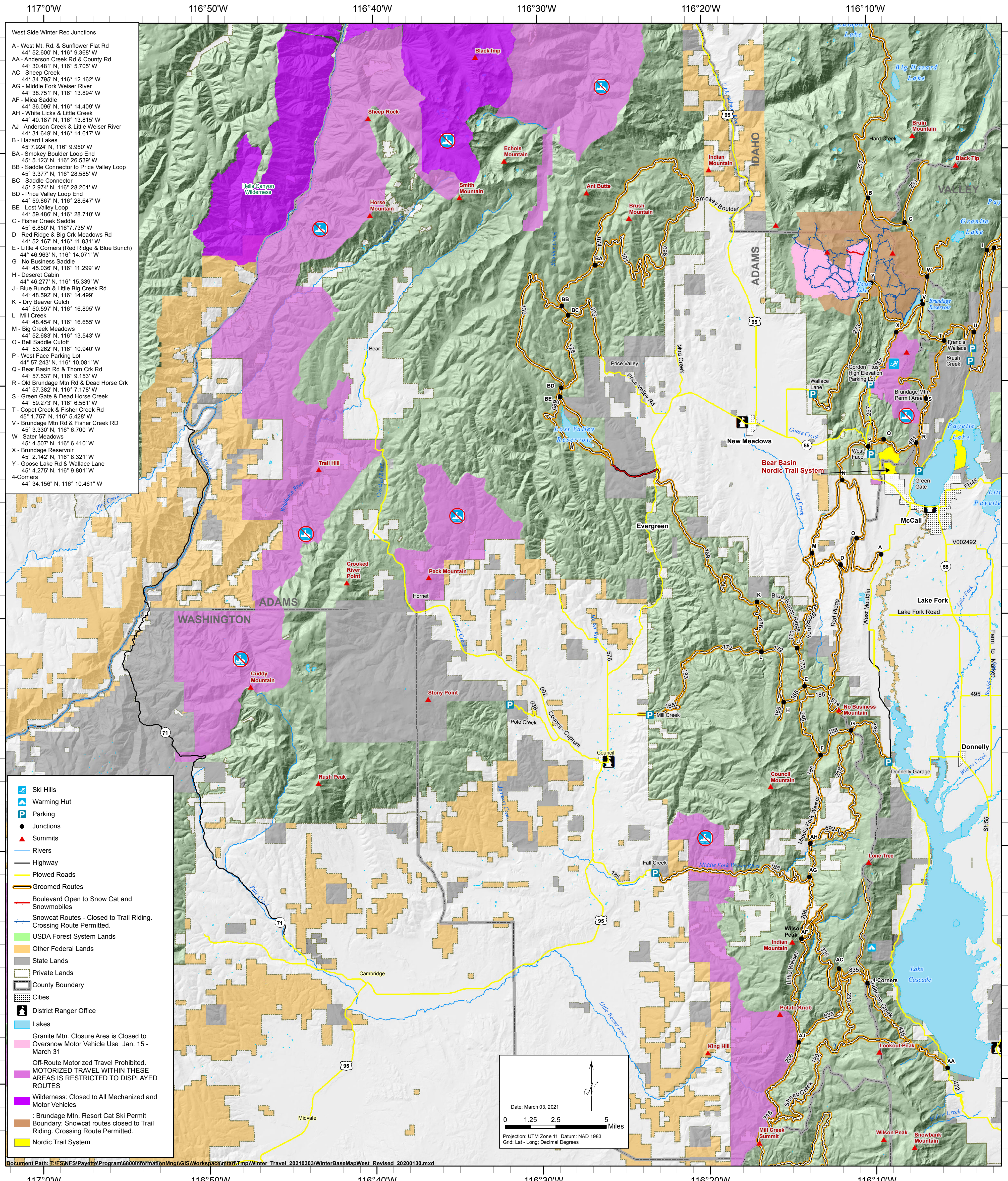
Special Order (0412-546)
Closes portions of the Granite Mountain area annually to over-snow motor vehicle use. The purpose of this order is to provide safe recreation opportunities for winter recreationists desiring back-country skiing opportunities (free of snowmobile tracks) which are challenging to ski through safely).

Special Order (0412-547)
Implements a seasonal restriction of over-snow motorized vehicles on snowcat routes within the Brundage Mountain Resort cat ski permit boundaries from December 15 to March 31.

The Special Order closes snowcat routes within the permit boundaries to motorized users as a direct line of travel. Motorized recreationists are still permitted to cross over the snowcat routes within the permit boundaries as a direct line of travel. Motorized recreationists are still permitted to cross over the snowcat routes within the permit boundaries as a direct line of travel. Motorized recreationists are still permitted to cross over the snowcat routes within the permit boundaries as a direct line of travel.

This order is in place to provide cat skiing opportunities and reduce safety concerns regarding potential collision between snowmobile and the permitted snowcat.

Note:
The QR Code will take you to the Travel Management Planning Web Site (<http://www.idaho.gov/forestmanagement>)
This link will take you directly to the Winter Recreation Maps (<http://www.idaho.gov/forestmanagement>)
File: C:\DOCUMENTS\1\report\0590.pdf



The U.S. Department of Agriculture (USDA) prohibits discrimination in all its programs and activities on the basis of race, color, national origin, age, disability, and where applicable, sex, marital status, familial status, parental status, religion, sexual orientation, genetic information, or ancestry. This prohibition applies to all programs. Persons with disabilities who require alternative means for communication of program information (Braille, large print, audiotape, etc.) should contact the USDA Office of Civil Rights, 1400 Independence Avenue, S.W., Washington, D.C. 20250-9410, or call (800) 795-3272 (voice) or (202) 720-6382 (TDD). USDA is an equal opportunity provider and employer.

INFORMATION SOURCES

Payette National Forest
500 North Mission Blvd # 2, McCall, ID 83638
www.fs.fed.us/id/payette

Council Ranger District
2092 Highway 95, Council ID 83612
208-535-0100

Weiser Ranger District
851 E. 9th St., Weiser, ID 83672
208-549-4200

New Meadows Ranger District
3674 Highway 95, New Meadows, ID 83654
208-347-0300

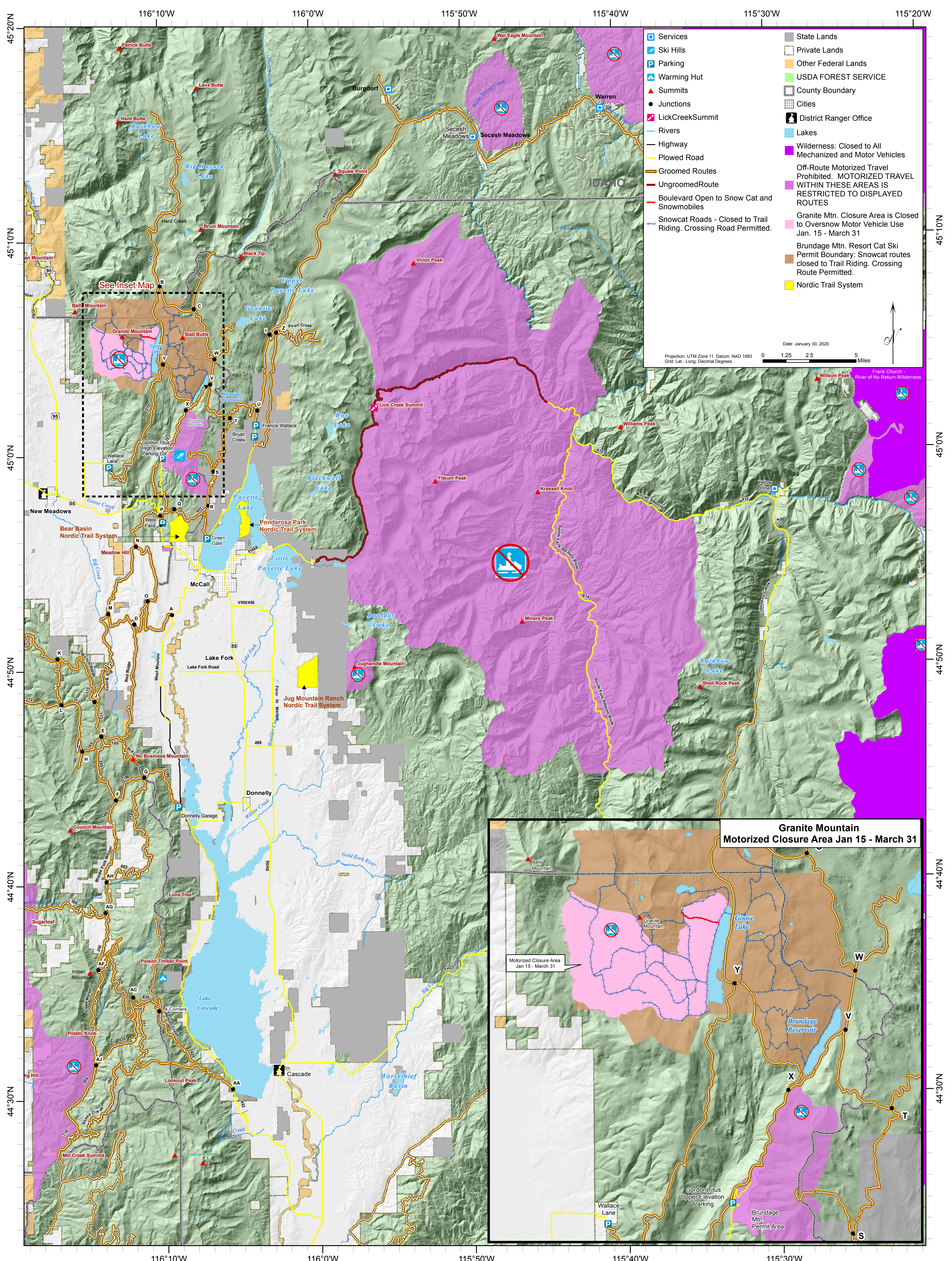
McCall Ranger District
102 W. Lake St., McCall, ID 83638
208-834-0400

Kressler Ranger District
500 N. Mission, 208-534-0600
208-534-0600

Data Disclaimer:

The USDA Forest Service makes no warranty, expressed or implied, including the warranties of merchantability and fitness for a particular purpose, for the accuracy, reliability, completeness, or utility of the data or for the proper or incorrect use of these geospatial data. These geospatial data and related maps or graphics are not legal documents and are not intended to be used as such. The data descriptions or boundaries, legal jurisdictions, or restrictions that may be in place on either public or private land. Natural hazards should exercise due caution. The data are dynamic and may change without notice. The data are dynamic and may change without notice. The data are dynamic and may change without notice. The data are dynamic and may change without notice.

- East Side Winter Rec. Map Junctions
- A - West Mt. Rd & Sunflower Flat Rd 44° 52.800' N, 116° 9.388' W
 - AA - Anderson Creek Rd & County Rd 44° 30.481' N, 116° 5.705' W
 - AC - Sheep Creek 44° 34.795' N, 116° 12.162' W
 - AG - Middle Fork Weiser River 44° 40.187' N, 116° 13.815' W
 - AH - White Lick & Little Creek 44° 40.187' N, 116° 13.815' W
 - AJ - Anderson Creek & Little Weiser River 44° 31.649' N, 116° 14.617' W
 - B - Hazard Lakes 45° 7.924' N, 116° 9.950' W
 - C - Fisher Creek Saddle 45° 6.830' N, 116° 7.735' W
 - D - 44° 52.800' N, 116° 9.388' W
 - E - Little A Corners (Fist Ridge & Blue Bunch) 44° 46.963' N, 116° 14.071' W
 - F - Middle Fork Weiser River & No Business 44° 43.988' N, 116° 13.148' W
 - G - No Business Saddle 44° 45.026' N, 116° 11.289' W
 - H - Deseret Cabin 116° 15.339' W
 - I - Peak 116° 15.339' W
 - J - Blue Bunch & Little Big Creek Rd. 44° 48.922' N, 116° 14.489' W
 - K - Dry Beaver Gulch 44° 50.597' N, 116° 16.895' W
 - L - Mill Creek 44° 28.454' N, 116° 16.855' W
 - M - Bear Reservoir Meadows 3,543' W 44° 52.800' N, 116° 9.388' W
 - N - Fish Lake & Red Ridge 44° 55.800' N, 116° 11.690' W
 - O - Ball Saddle Cluff 44° 53.822' N, 116° 10.940' W
 - P - West Face Parking Lot 44° 57.243' N, 116° 10.081' W
 - Q - Bear Basin Rd & Thom Crk Rd 44° 57.243' N, 116° 10.081' W
 - R - Old 51, 537' N, 116° 5.153' W
 - S - Green Gate & Dead Horse Creek 44° 52.732' N, 116° 7.728' W
 - T - Copel Creek & Fisher Creek Rd 45° 1.757' N, 116° 5.428' W
 - U - Copel Creek & Warren Wagon Rd 45° 2.084' N, 116° 3.621' W
 - V - Brundage Mtn Rd & Fisher Creek Rd 45° 3.330' N, 116° 6.700' W
 - W - Salter Meadows 45° 4.507' N, 116° 6.410' W
 - X - Brundage Reservoir 45° 2.142' N, 116° 8.321' W
 - Y - Goose Lake Rd & Wallace Lane 45° 4.213' N, 116° 9.801' W
 - Z - 45° 5.717' N, 116° 2.323' W
 - 4-Corners 44° 34.156' N, 116° 10.461' W



Legend

- Services
- Ski Hills
- Parking
- Warming Hut
- Summits
- Junctions
- LickCreekSummit
- Rivers
- Highway
- Plowed Road
- Groomed Routes
- UngroomedRoute
- Boulevard Open to Snow Cat and Snowmobiles
- Snowcat Roads - Closed to Trail Riding, Crossing Road Permitted.
- State Lands
- Private Lands
- Other Federal Lands
- USDA FOREST SERVICE
- County Boundary
- Cities
- District Ranger Office
- Lakes
- Wilderness: Closed to All Mechanized and Motor Vehicles
- Off-Route Motorized Travel Prohibited, MOTORIZED TRAVEL WITHIN THESE AREAS IS RESTRICTED TO DISPLAYED ROUTES
- Granite Mtn. Closure Area is Closed to Oversnow Motor Vehicle Use Jan. 15 - March 31
- Brundage Mtn. Resort Cat Ski Permit Boundary: Snowcat routes closed to Trail Riding, Crossing Route Permitted.
- Nordic Trail System

Date: January 30, 2020
Projection: UTM Zone 11 Datum: NAD 1983
Grid Lat - Long: Decimal Degree

